



Summer Lovin' Children's Sun Hat

Intermediate Sewing Level, approximately 45 minutes.

© Copyright 2011, Christine Leiberan-Titus, All Rights Reserved. Reproduction of this pattern is strictly prohibited by US and International copyright law. No part of this pattern may be reproduced in print or electronically, including, but not limited to pattern pieces, diagrams instructions and photographs.

Original pattern purchasers only may sew and sell items from their Muse of the Morning craft art sewing pattern with no licensing fees. Mass production and/or large scale manufacturing of items from Muse of the Morning patterns is prohibited without the designer's permission. Although we appreciate sellers using the name of the pattern in their listing and giving us a link back, it is not required.

Sew & Sellers who wish to be advertised on the Muse of the Morning website and use the seamstress approval graphics need to join the Sew & Sellers club. Check out <http://www.museofthemorning.com/sewsell> or email cs@museofthemorning.com for more details on joining this free seamstresses club.

Finished Garment Measurements (all measurements are approximate)

	Small	Medium	Large
Head Circumference	14 - 16 inches	16 - 19 inches	19 - 21 inches

NOTES:

Please read all INSTRUCTIONS before beginning to sew the craft art pattern. PRESHRINK FABRIC by washing on hot/cold before cutting and sewing. There is a ¼ inch SEAM ALLOWANCE allowed on all pattern pieces.

SUPPLIES REQUIRED:

For printing and putting pattern together: printer, paper, adhesive tape and scissors.

For Cutting Fabric: Fabric scissors, straight pins or pattern weights.

For Sewing the Pattern: sewing machine with straight stitch; sewing thread; needle size 14 or 16.

SUGGESTED FABRICS:

5/8 yard of each recommended fabric.

Outer: heavier weight woven fabrics work best- "outdoor fabrics", canvas, denim, bottom weights, corduroy, etc...

Lining: same as above or quilter's cotton, broadcloth

SUGGESTED NOTIONS: Sew on interfacing

Printing and Pattern Piecing

Instructions:

Pattern Pieces:

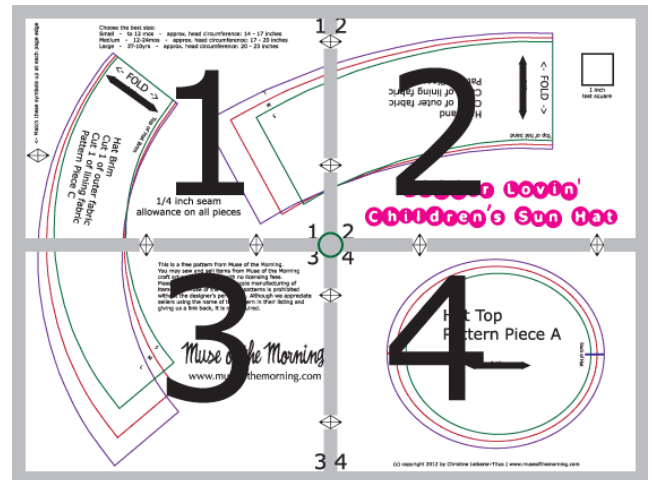
1. Hat Top
2. Hat Band
3. Hand Brim

1. Print out all pattern and instruction sheets with a printer. Make sure page scaling is set to "none" and auto rotate is turned off. Measure the test ruler to make sure the pattern printed at the right size.

2. Using tape and scissors, piece together the 6

pattern sheets, by matching up page markers, and following the diagram to the right. Each page number is marked in the corners.

3. Finish by cutting out the pattern pieces on the lines. Transfer all pattern markings to pattern pieces with washable marker.



Cutting Instructions:

1. Lay the desired pattern pieces on the fabric following the grain direction as marked on the pattern piece. Secure pattern pieces to fabric with pins or pattern weights.

2. Cut out your pattern pieces and transfer necessary markings. Mark the fold of the hat band (pattern piece 2) and the hat brim (pattern piece 3) with pins.

Time To Sew!

Outer Fabric

1. With right sides together, sew the short ends of the hat band (pattern piece 2) with a 1/4 inch seam allowance (figure 1). Press seam open.

2. With right sides together, match up the seam of the TOP of the hat band with the coordinating mark on the hat top (pattern piece 1). Pin in place.

3. Match the center fold of the TOP of the hat band to the coordinating mark on the opposite end of the hat top. Pin in place.

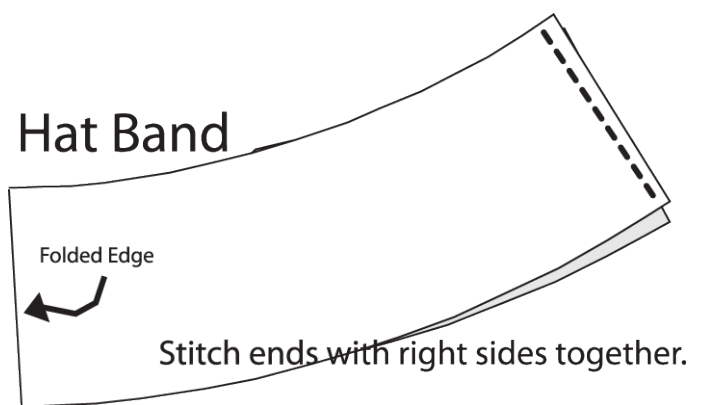
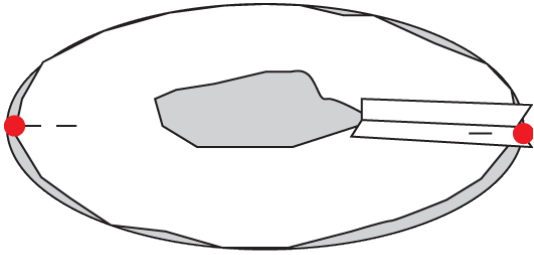


Figure 1

Tip! The TOP of the hat band is the shorter edge.



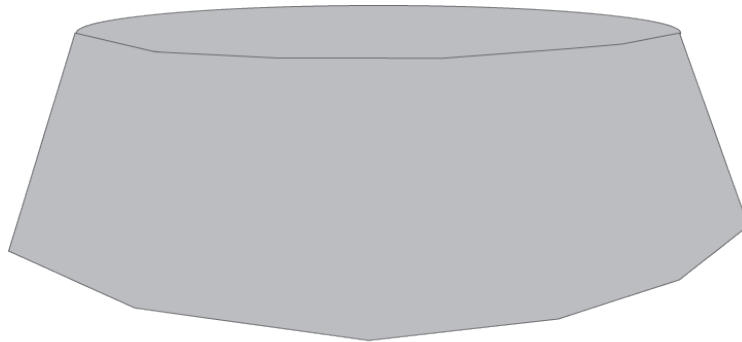
TOP of Hat Band with right sides together to Hat Top

Figure 2

4. Pin the TOP of the hat band around the edges of the hat top (figure 2).

5. Sew along the raw edge with a ¼ inch seam allowance. Clip seams.

6. Turn right side out (figure 3).



Hat Band Sewn to Hat Top

Figure 3

6. Take the hat brim (pattern piece 3) and with right sides together, sew together ¼ inch from the raw edge. Press seam open (refer to figure 1 for how-to).

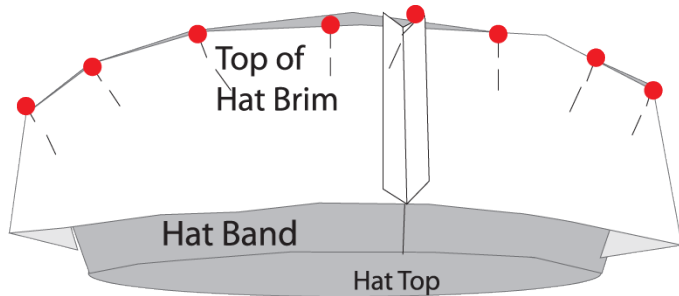


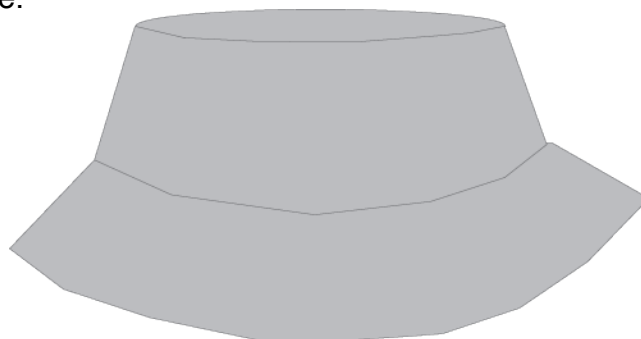
Figure 4

7. With right sides together, pin the seam at the TOP of the hat brim to the raw edge at the seam of the hat band.

8. Continue pinning the TOP of the hat brim around the edge of the hat band. Sew along the raw edge with a ¼ inch seam allowance. Clip

seams.

9. Set the outer fabric aside.



Hat Top, Band and Brim all sewn together.

Figure 5

Lining Fabric

1. Follow steps 1 – 9 to put the lining together.

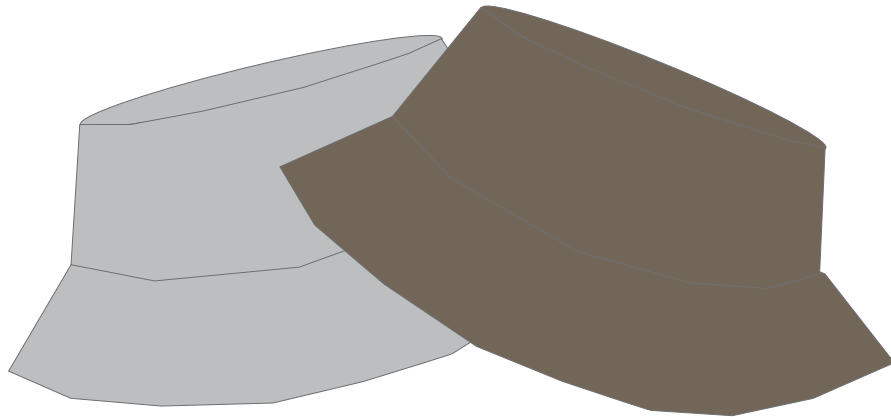


Figure 6

Put The Hat Together

1. With right sides together, pin the raw edges of the lining hat and the outer fabric hat. Match up seams. Figure 7.

2. Sew along edges with $\frac{1}{4}$ inch seam. Leave a section open about 2 – 3 inches long (figure 8). Clip seams.

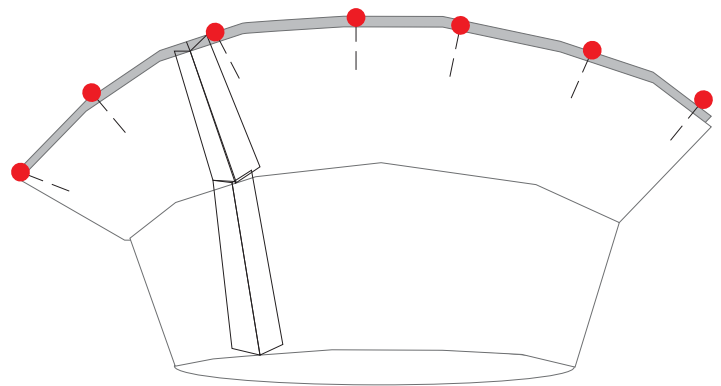


Figure 7

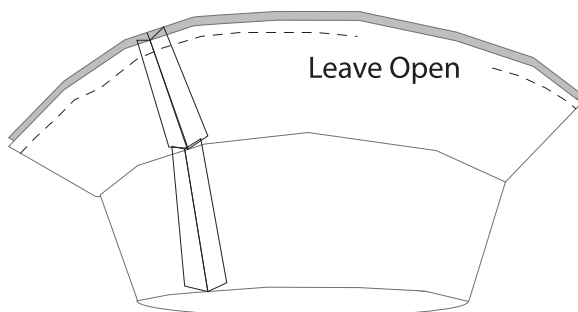


Figure 9

3. Turn hat right side out through opening. Fold the raw edges of the opening toward the inside and press down.

4. Topstitch along the edge with a $\frac{1}{4}$ inch seam allowance (figure 8). Make sure to sew the opening closed.

5. Done!

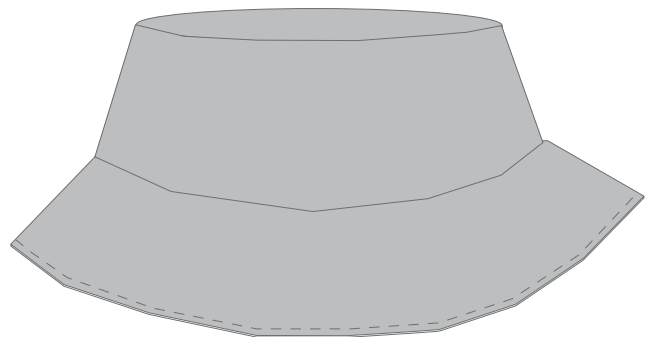


Figure 8

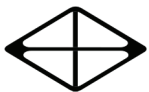
Choose the best size:

Small - to 12 mos - approx. head circumference: 14 - 17 inches

Medium - 12-24mos - approx. head circumference: 17 - 20 inches

Large - 3T-10yrs - approx. head circumference: 20 - 23 inches

<- Match these symbols up at each page edge



Hat Brim
Cut 1 of outer fabric
Cut 1 of lining fabric
Pattern Piece C

FOLD

Grainline

TOP of Hat Brim

1/4 inch seam allowance on all pieces

T
W
S



2

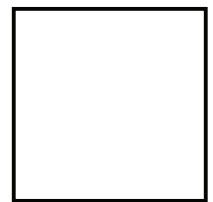


Hat Band
Cut 1 of outer fabric
Cut 1 of lining fabric
Pattern Piece B

TOP of hat band



<- FOLD ->



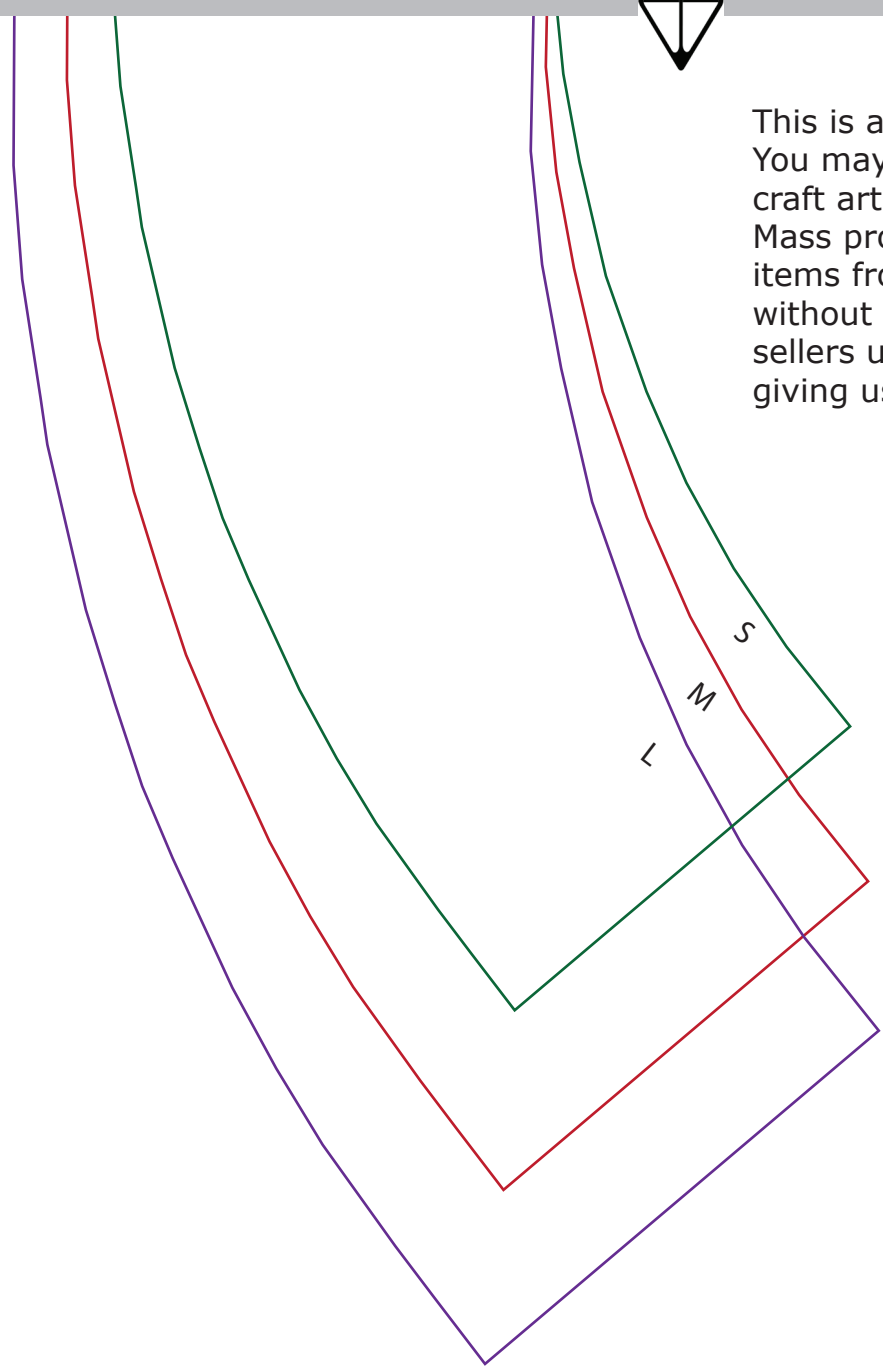
1 inch
test square

SUMMER LOVIN' CHILDREN'S SUN HAT

2



This is a free pattern from Muse of the Morning. You may sew and sell items from Muse of the Morning craft art sewing patterns with no licensing fees. Mass production and/or large scale manufacturing of items from Muse of the Morning patterns is prohibited without the designer's permission. Although we appreciate sellers using the name of the pattern in their listing and giving us a link back, it is not required.

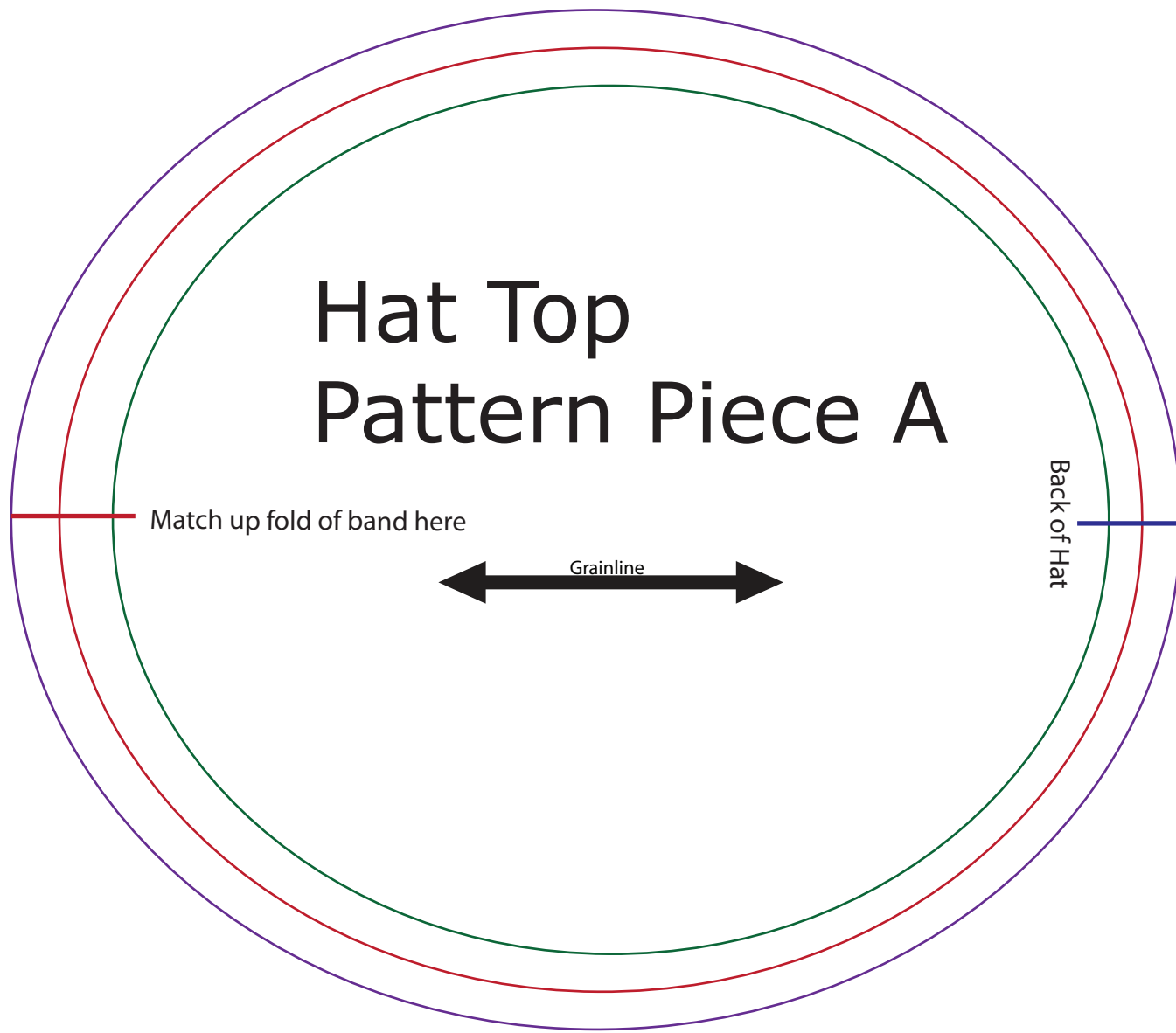


Muse of the Morning*
www.museofthemorning.com

4



Hat Top Pattern Piece A



Match up fold of band here

Back of Hat

Grainline

4